



National
Qualifications
2017

X733/77/41

**Geography
Supplementary Item C
for Q3**

FRIDAY, 26 MAY

9:00 AM – 11:30 AM



* X 7 3 3 7 7 4 1 *

SUPPLEMENTARY ITEM C

Figure 1: Precipitation variation for the Niger River Basin (1955/2010)

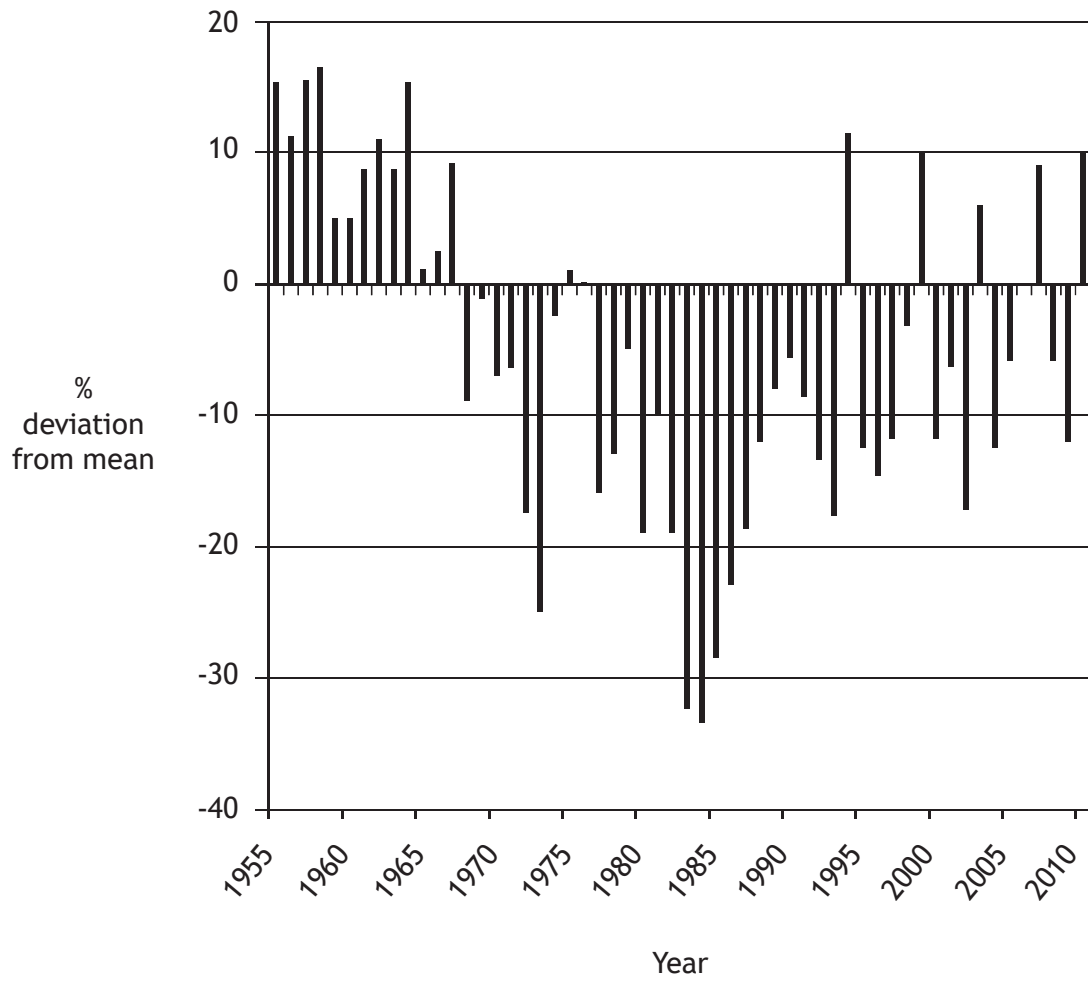


Figure 2: Irrigation and Hydroelectricity in the Niger River Basin

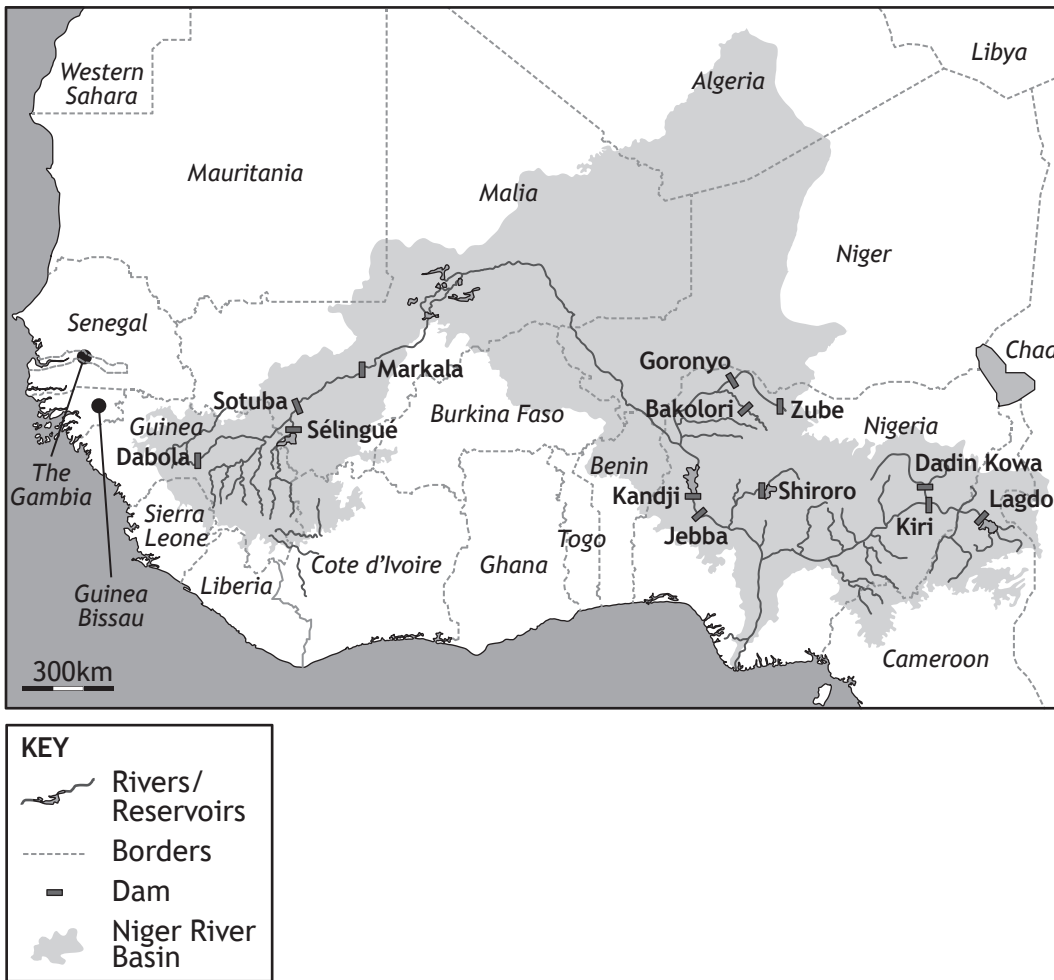


Figure 3

Name of Dam	Size (km ²)	Use
Dabola	6	Hydroelectric Production (GWh/year)
Sotuba	40	Hydroelectric Production (GWh/year)
	3000	Irrigated area
Sélingué	200	Hydroelectric Production (GWh/year)
	1500	Irrigated area
Markala	70,000	Irrigated area
Goronyo	32,000	Irrigated area
Kandji	2000	Hydroelectric Production (GWh/year)
Bakolori	23,000	Irrigated area
Jebba	1650	Hydroelectric Production (GWh/year)
Shiroro	2000	Hydroelectric Production (GWh/year)
Dadin Kowa	44,000	Irrigated area
Kiri	12,000	Irrigated area
Ladgo	37,000	Irrigable surface area
	320	Hydroelectric Production (GWh/year)

[BLANK PAGE]

DO NOT WRITE ON THIS PAGE