

FOR OFFICIAL USE



National
Qualifications
2022 MODIFIED

Mark

X835/77/01

Graphic Communication

MONDAY, 16 MAY

1:15 PM – 3:15 PM



* X 8 3 5 7 7 0 1 *

Fill in these boxes and read what is printed below.

Full name of centre

Town

Forename(s)

Surname

Number of seat

Date of birth

Day

Month

Year

Scottish candidate number

Total marks — 80

Attempt ALL questions.

All dimensions are in mm.

All technical sketches and drawings use third angle projection.

You may use rulers, compasses or trammels for measuring.

In all questions you may use sketches and annotations to support your answer if you wish.

Write your answers clearly in the spaces provided in this booklet. Additional space for answers is provided at the end of this booklet. If you use this space you must clearly identify the question number you are attempting.

Use **blue** or **black** ink.

Before leaving the examination room you must give this booklet to the Invigilator; if you do not, you may lose all the marks for this paper.



* X 8 3 5 7 7 0 1 0 1 *

Total marks — 80
Attempt ALL questions

DO NOT
WRITE IN
THIS
MARGIN

1. An invitation to the 50th anniversary of the Golden Camera film and television awards is shown below.

front of invitation



back of invitation



This is an extract of the invitation design brief:

The invitation must be made eye-catching through the use of contrast, exude luxury and link clearly with the 50th anniversary celebration. The design should show that the event is relevant to the modern era but pay homage to the golden age of film. The black silhouette is to be embossed with the brand logo and the gold areas should include matt, gloss and textured finishes.



1. (continued)

(a) Describe four ways the invitation meets the design brief.

4

(b) Explain why it is important that each of the following graphics technologies are specified for printing the invitation:

- Pantone reference
- calendaring
- duplexing
- paper weight.

4



2. A 3D CAD model of a reusable cup is shown below. It consists of a cup, a lid and a detachable straw.



Refer to **supplementary sheet 1** for use with question 2 (a).

- (a) Describe the 3D CAD modelling techniques used to create the **straw**.

Refer to the dimensions in your answer.

You may use sketches to support your answer.

8



2. (a) (continued)



* X 8 3 5 7 7 0 1 0 5 *

2. (continued)

Morphing (freeform modelling) was used to create a series of **grip indentations** on the cup.

Refer to stages 1 to 4 shown on **supplementary sheet 2** for use with question 2 (b).

- (b) Describe, using morphing (freeform modelling) techniques, how the **grip indentations** on the cup were created.

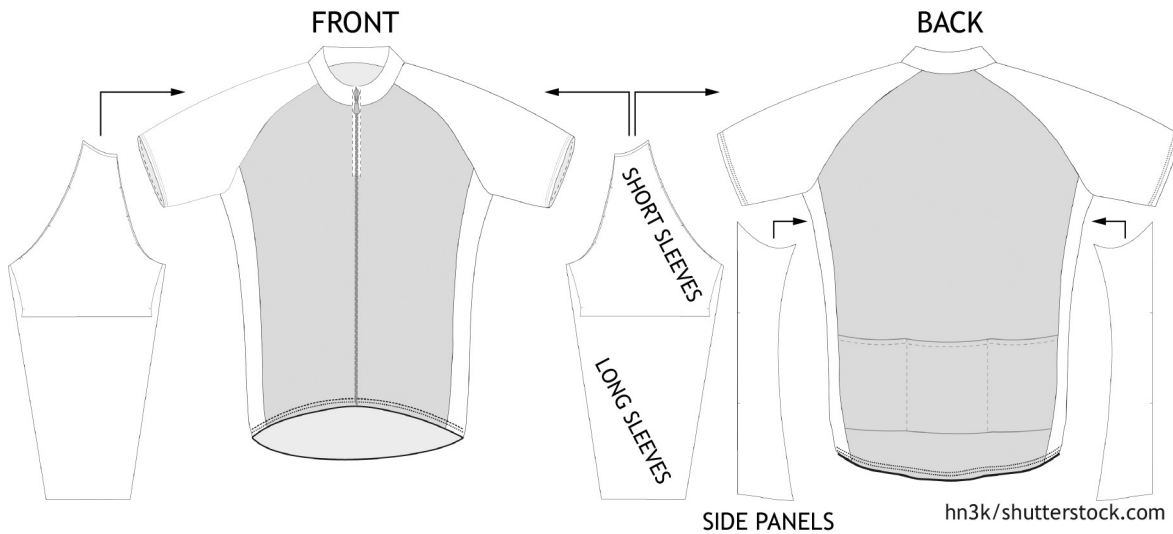
You may use sketches to support your answer.

4



3. A sportswear company manufactures cycle jerseys which can be customised. Two examples of cycle jerseys on their website are shown below.

CYCLING SHIRT: SHORT AND LONG SLEEVES



- (a) Describe, giving one reason, why the cycle jerseys on the website include surface developments.

1

- (b) Explain two differences between ppi and dpi when working with digital and printed media.

2

[Turn over



3. (continued)

Refer to **supplementary sheet 3** for use with question 3 (c) and 3 (d).

The company considered various printing options for the cycle jersey but there were a number of disadvantages of using screen printing.

- (d) Explain, considering the information in the artwork guidelines, why screen printing is not suitable for this purpose.

3

The company is going to produce a promotional video of the manufacturing process. Various graphic media file formats are being considered.

- (e) Describe one advantage of each of the following graphic media file formats. You must give a different advantage for each graphic media file format.

2

mpeg _____

3gp _____

[Turn over



4. A commercial interior design company has designed the office shown below. One of the company's designers produced the 3D model shown in **Image 1**.

MARKS DO NOT WRITE IN THIS MARGIN

Image 1



The designer then applied illustration techniques to the 3D model shown in **Image 2**.

Image 2



- (a) Identify three different illustration techniques, other than applied lighting and HDRI, and describe how they have been used to enhance **Image 2**.

6

Technique 1 _____

Description _____



* X 8 3 5 7 7 0 1 1 0 *

4. (a) (continued)

Technique 2 _____

Description _____

Technique 3 _____

Description _____

(b) Describe two advantages of using HDRI techniques to enhance **Image 2**. 2

(c) Identify three types of lighting applied in **Image 2** and explain why each has been used. 6

Lighting type 1 _____

Explanation _____

Lighting type 2 _____

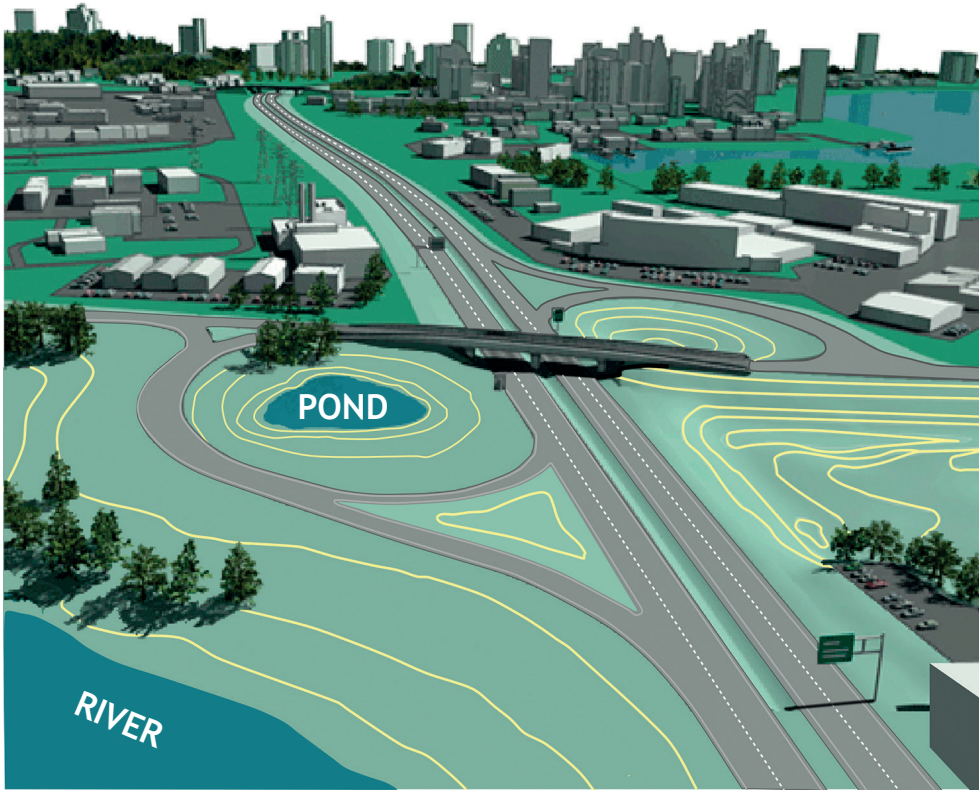
Explanation _____

Lighting type 3 _____

Explanation _____



5. A construction company is designing and building the road junction shown in the graphic below.



5. (continued)

A structural engineer carried out an FEA test on a computer model on the bridge within the junction.

- (a) Describe two ways a structural engineer would use the FEA test results.

2

- (b) A model maker used information from a topographical survey carried out on the area around the junction.

Explain why the topographical survey would provide useful information to a model maker.

2

- (c) An animator created two simulations of traffic flow. The first simulation shows the current traffic flow. The second simulation shows the anticipated traffic flow after the junction is complete.

Explain, giving three reasons, why motion tweening was used to animate the vehicles used in the traffic flow simulation.

3



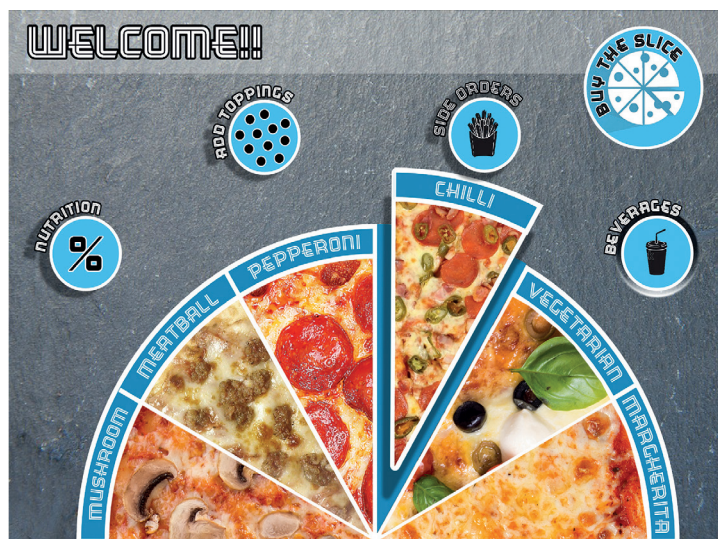
6. A pizza company are introducing interactive screens for ordering instore as shown below.



interactive screen before use



company logo



interactive screen during use

- (a) Explain why the interactive screen has been designed to be easy to navigate. 3



6. (continued)

- (b) Describe how the designer has used focal point, silhouette and negative space in the design of the company logo.

3

[Turn over



6. (continued)

Two images from the interactive screen are shown below.

DO NOT
WRITE IN
THIS
MARGIN



Image A Interactive screen before use



Image B Interactive screen during use



6. (continued)

(c) Describe two ways each of the following design elements and principles enhances the interactive screen.

(i) Radial balance _____ 2

(ii) Texture _____ 2

(d) Describe, using the correct graphic terms, the animation techniques and video edits that will change **Image A** to **Image B**. 2

[Turn over



7. A 3D CAD model of a prototype kayak is shown below.



Refer to **supplementary sheet 4** for use with question 7.

A CAD technician has created technical graphics for a kayak manufacturing company but has made errors applying British Standards.

(a) Describe three British Standards errors in the kayak technical graphics on **supplementary sheet 4**.

3



7. (continued)

MARKS
DO NOT
WRITE IN
THIS
MARGIN

- (b) (i) Describe how a 2D CAD sketch constraint was used to create the rope attachment point.

Refer to the dimensions in your answer.

You may use sketches to support your answer.

2

The cockpit coaming feature has a fillet that changes from 2 to 6 mm and back again.

- (ii) Describe the 3D CAD modelling technique used to create this feature and how it was applied.

Refer to the dimensions in your answer.

You may use sketches to support your answer.

2



7. (continued)

The manufacturing company has written about the prototype kayak in its literature.

The prototype kayak was put through a rigorous series of tests. Using our state-of-the-art technology, we were able to show the kayak's improved performance and the kayaker's full range of movement when they descended our specially designed course.

The company used a range of graphic technologies in the design and testing of the prototype kayak.

- (c) (i) Describe how CFD digital testing could be used in the design of the prototype kayak. 2

- (ii) Describe how motion capture technology was used by the manufacturing company. 2

[END OF QUESTION PAPER]



MARKS DO NOT
WRITE IN
THIS
MARGIN

ADDITIONAL SPACE FOR ANSWERS



* X 8 3 5 7 7 0 1 2 1 *

MARKS DO NOT
WRITE IN
THIS
MARGIN

ADDITIONAL SPACE FOR ANSWERS



* X 8 3 5 7 7 0 1 2 2 *

[BLANK PAGE]

DO NOT WRITE ON THIS PAGE



* X 8 3 5 7 7 0 1 2 3 *

[BLANK PAGE]

DO NOT WRITE ON THIS PAGE

Acknowledgement of copyright

Question 3 Screenshot of cycle jersey is taken from www.thecyclejersey.com. Reproduced by kind permission of The Cycle Jersey.

Question 4 murattellioglu/shutterstock.com

Question 5 Image of road junction.

SQA has made every effort to trace the owners of copyright of this item and seek permissions. We are happy to discuss permission requirements and incorporate any missing acknowledgement. Please contact question.papers@sqa.org.uk.

Question 6 bestv/shutterstock.com

Oksana Mizina/shutterstock.com

Alexander Baluev/shutterstock.com

Ivan Cheremisin/shutterstock.com

Farhad Bek/shutterstock.com

Deans_Icons/pixabay

stux/pixabay



* X 8 3 5 7 7 0 1 2 4 *